

PE/Cy5 Anti-Mouse CD3 Monoclonal Antibody



天津三箭生物技术股份有限公司
Tianjin Sungene Biotech Co., Ltd.
精准 高效 稳定 Precision Efficient Stable

Catalog Number	Vial Size
M10034-35A	25 µg
M10034-35C	100 µg

Market | 400-621-0003
marketing@sungenebiotech.com

Support | 022-66211636-8024
techsupport@sungenebiotech.com

Web | www.sungenebiotech.com

Important Note: Centrifuge before opening to ensure complete recovery of vial contents.
This product is guaranteed up to one year from purchase.

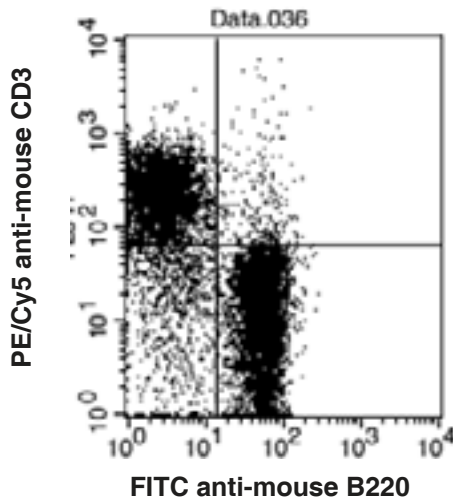
Purified Antibody Characterization

Clone	Isotype	Reactivity
17A2	Rat IgG2b	Mouse

Description

CD3, also known as T3, is a member of the Ig superfamily and primarily expressed on T cells, NK-T cells, and at different levels on thymocytes during T cell differentiation. CD3 is composed of CD3ε, δ, γ and ζ chains. It forms a TCR complex by associating with TCR α/β or γ/δ chains. CD3 plays a critical role in TCR signal transduction, T cell activation, and antigen recognition by binding the peptide/MHC antigen complex.

Illustration of Immunofluorescent Staining



Balb/C mouse splenocytes stained with PE/Cy5 anti-mouse CD3 and FITC anti-mouse B220

Product Information

Conjugation: PE/Cy5

Formulation: PBS pH 7.2, 0.09% NaN₃, 0.2% BSA

Concentration: 0.2 mg/ml

Storage: Keep as concentrated solution. Store at 4°C and protected from prolonged exposure to light. **Do not freeze.**

Application: Recommended Application: FC

Usage: Each lot of this antibody is quality control tested by immunofluorescent staining with flow cytometric analysis (The amount of the reagent is suggested to be used ≤ 1.0 µg /10⁶ cells in 100 µl). Since applications vary, the appropriate dilutions must be determined for individual use.

References

- [1] Miescher, G.C., et al. 1989. Immunol. Lett. 23:113.
- [2] Mysliwicz, J., et al. 1992. Blood 80:2661.
- [3] Wu, L., et al. 1991. J. Exp. Med. 174:1617.
- [4] Zhang, Y., et al. 2002. J. Immunol. 168:3088.
- [5] Zan, H., et al. 2005. EMBO J. 24:3757.

For Research Use Only.